

Tapestry Data Migration Manager (DMM) is a simple but powerful tool that supports affordable, high-performance data migration in heterogeneous storage environments.

## TAPESTRY DATA MIGRATION MANAGER

### HIGHLIGHTS

- Standardizes data migration for heterogeneous data centers, enabling greater storage purchasing flexibility
- Reduces administrative workload and cost by requiring less planning and execution time than alternative migration tools
- Combines powerful enterprise-class capabilities with a simple, easy-to-use interface and functionality
- Reduces application downtime with terabyte-per-hour migration speeds, improving Service Level Agreements (SLAs)
- Minimizes the need for expensive operating system-specific, per-server software such as volume management and replication tools
- Supports storage arrays from industry leaders such as IBM, EMC, HP, and Hitachi
- Leverages Brocade routing technology to perform migrations across Storage Area Networks (SANs) and Wide Area Networks (WANs)

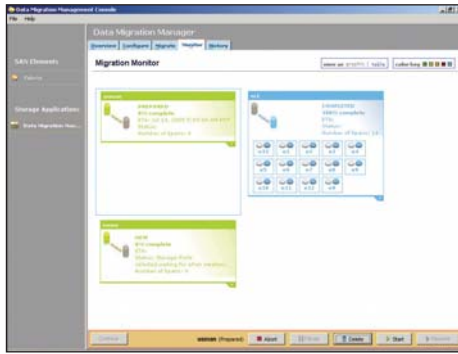
### Fast and Easy Data Migration

In today's dynamic enterprises, migrating data has become an increasingly complex problem. In some cases, organizations might need only to perform a one-time *project-oriented* migration—such as a test environment or an archive. However, most organizations face growing demands for *operational* migrations, in which they must move or copy volumes of data on a monthly, weekly, or even daily basis.

To efficiently support this type of Information Lifecycle Management (ILM), many organizations are implementing tiered storage systems—migrating static and less frequently accessed data to slower and more permanent storage media. Unfortunately, the different tiers of storage often have different interfaces and functions that complicate data movement. Moreover, current migration tools are often expensive, difficult to use, and limited in their ability to interoperate between storage types and vendors.

To help organizations overcome these challenges, Brocade® Tapestry™ Data Migration Manager (DMM) provides a fast, predictable, and storage-centric migration solution for heterogeneous environments. To provide the most flexible solution possible, Tapestry DMM utilizes the intelligent Brocade SilkWorm® Fabric Application Platform. Because it is designed for easy *wire-once* setup, organizations can quickly deploy Tapestry DMM simply by connecting it to an existing SAN.

# TAPESTRY DATA MIGRATION MANAGER



**Figure 1.** Tapestry DMM features an easy-to-use interface that simplifies migration tasks.

## HIGH PERFORMANCE AT A LOW COST

Tapestry DMM provides a wide range of advantages over typical data migration offerings: it is faster, more affordable, and easier to use. Terabyte-per-hour migrations move more data in shorter downtime windows, supporting larger amounts of data. In fact, a single Tapestry DMM appliance can migrate up to 128 volumes in parallel.

Tapestry DMM also reduces both operating and capital expenses. It lowers operating expenses by reducing planning cycle overhead and actual execution time. In addition, organizations can lower their capital expenses by avoiding the purchase of expensive storage-specific tools and by enjoying greater flexibility in choosing what types of storage media they use. In this way, Tapestry DMM provides cost-effective, project-oriented migration of data volumes independent of operating system, application, or storage array.

## A FLEXIBLE, SIMPLIFIED SOLUTION

To simplify IT operations and data migration in particular, Tapestry DMM avoids the complexity of traditional volume management and replication tools. As a result, it unifies support for the broadest range of storage devices while improving predictability with *percent done* indications and e-mail notification of completed migration projects.

Because Tapestry DMM is a SAN-based solution managed by storage administrators, it is less disruptive than server-based solutions and easier to plan for than traditional professional services offerings. Prior to a migration project, organizations can easily insert Tapestry DMM into the data path. After the project is complete, they can easily remove Tapestry DMM—making it a low-risk, low-overhead solution.

To support the widest range of IT environments and users, Tapestry DMM provides two management approaches: a robust command line interface for enterprises that want to utilize third-party tools and customized scripts, and a GUI-based management console with a wizard-like step-by-step interface for organizations with limited staffing. The interfaces are based on Brocade Fabric Manager, which provides familiar storage management functions and policy-based assignment of destination volumes to source volumes for greater consistency.

## REDUCED COST, COMPLEXITY, AND COMPLIANCE ISSUES

Tapestry DMM is specifically designed to address the challenge of the “three C’s”: cost, complexity, and compliance. Compared to alternative offerings, it is typically much less expensive—both in reduced capital

expenses (such as appliance hardware and management software) and operating expenses (such as administrative planning, professional services, and application downtime).

Tapestry DMM reduces IT complexity by requiring much less planning and hands-on execution time than alternative tools. In addition, predictive behavior keeps administrators informed about the state of migration and probable completion time. Moreover, Tapestry DMM standardizes support for heterogeneous environments in a single tool.

To support heightened business and regulatory requirements, Tapestry DMM enables shorter migration windows and tighter SLAs, reducing application downtime and risk. Moreover, heterogeneous support enables a true tiered storage approach where automated, policy-based ILM tools can match the appropriate storage cost to the corresponding data access need—improving both efficiency and consistency. In addition, fast data migration over SANs and WANs can help enhance business continuance operations.

## MAXIMIZING INVESTMENTS

Brocade and its partners offer complete solutions to meet a wide range of technology and business requirements. These solutions include education and training, support, service, and professional services to help optimize technology investments. For more information, contact an authorized Brocade sales partner or visit [www.brocade.com](http://www.brocade.com).



### Corporate Headquarters

San Jose, CA USA  
T: (408) 333-8000  
[info@brocade.com](mailto:info@brocade.com)

### European and Latin American Headquarters

Geneva, Switzerland  
T: +41 22 799 56 40  
[emea-info@brocade.com](mailto:emea-info@brocade.com)

### Asia Pacific Headquarters

Singapore  
T: +65-6538-4700  
[apac-info@brocade.com](mailto:apac-info@brocade.com)

© 2005 Brocade Communications Systems, Inc. All Rights Reserved. 09/05 GA-DS-765-00

Brocade, the Brocade B weave logo, Fabric OS, Secure Fabric OS, and SilkWorm are registered trademarks and Tapestry is a trademark of Brocade Communications Systems, Inc., in the United States and/or in other countries. All other brands, products, or service names are or may be trademarks or service marks of, and are used to identify, products or services of their respective owners.

Notice: This document is for informational purposes only and does not set forth any warranty, expressed or implied, concerning any equipment, equipment feature, or service offered or to be offered by Brocade. Brocade reserves the right to make changes to this document at any time, without notice, and assumes no responsibility for its use. This informational document describes features that may not be currently available. Contact a Brocade sales office for information on feature and product availability. Export of technical data contained in this document may require an export license from the United States Government.